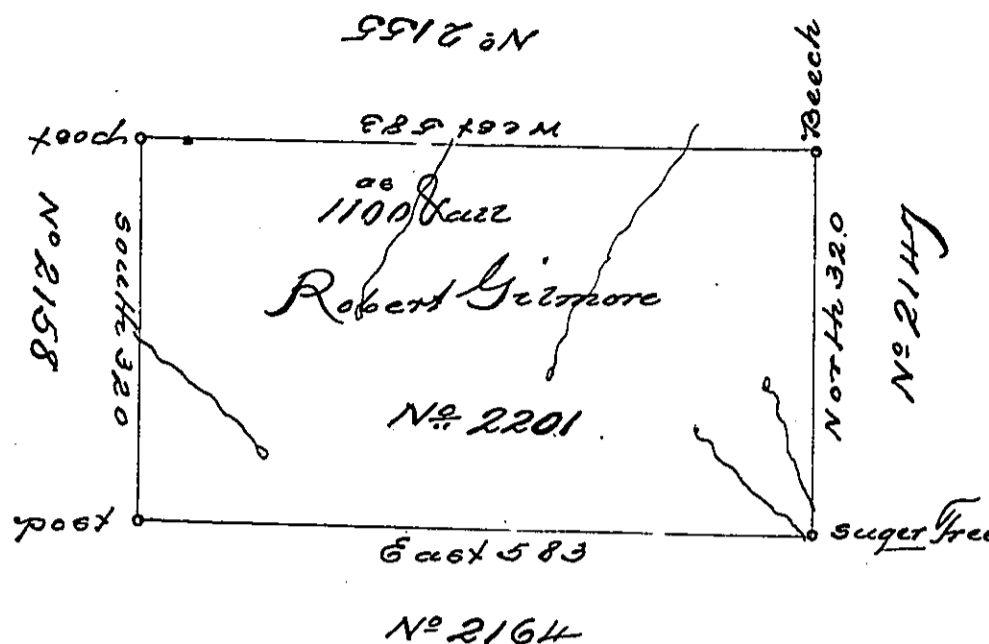


No 13



Situate about three Miles South of the Allegheny River and three Miles East of the Portage Branch of Allegheny in North[?] County containing 1100^{ac} and the usual allowance for Roads &c. Surveyed June 7th 1793 for Robert Gilmore in pursuance of a Warrant No 2201 bearing date the 10th December 1792.

Daniel Brodhead Esqr.
S. G.

John Canan D. S.

IN TESTIMONY that the above is a copy of the original remaining on file in the Department of Internal Affairs of Pennsylvania, made conformably to an Act of Assembly approved the 16th day of February, 1833, I have hereunto set my Hand and caused the Seal of said Department to be affixed at Harrisburg, this fourth day of October 1898

James W. Pitta
Secretary of Internal Affairs.